

## Features

- Uses PingWei advanced PerfectMOS6 technology
- Extremely low on-resistance  $R_{DS(on)}$
- Excellent  $Q_g \times R_{DS(on)}$  product(FOM)
- Excellent Low Ciss
- Qualified according to JEDEC criteria



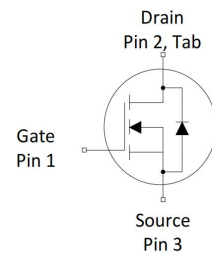
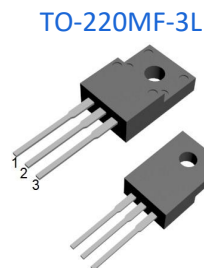
**100% DVDS Tested**  
**100% Avalanche Tested**

## Applications

- PFC stages, hard switching PWM stages and resonant switching
- PWM stages for e.g. PC Silverbox, Adapter, LCD & PDP TV, Lighting, Server, Telecom and UPS

## Product Summary

$V_{DS}$	650V
$R_{DS(on)@10V\ typ}$	150mΩ
$I_D$	20A



## Package Marking and Ordering Information

Part #	Marking	Package	Packing	Reel Size	Tape Width	Qty
PWE180N65MFS	E180N65MFS	TO-220MF-3L	Tube	N/A	N/A	50pcs

## Absolute Maximum Ratings

Parameter	Symbol	Value	Unit
Drain-source voltage	$V_{DS}$	650	V
Continuous drain current $T_C = 25^\circ\text{C}$ (Silicon limit) $T_C = 100^\circ\text{C}$ (Silicon limit)	$I_D$	20 13	A
Pulsed drain current ( $T_C = 25^\circ\text{C}$ , $t_p = 100\mu\text{s}$ )	$I_{D\ pulse}$	80	A
Avalanche energy, single pulse ( $L=10\text{mH}$ , $V_{ds}=50\text{V}$ )	$E_{AS}$	195	mJ
Gate-Source voltage	$V_{GS}$	$\pm 20$	V
Power dissipation $T_C = 25^\circ\text{C}$ $T_a = 25^\circ\text{C}$	$P_{tot}$	46 1.8	W
Operating junction and storage temperature	$T_j, T_{stg}$	-55...+150	$^\circ\text{C}$
Soldering temperature, wave soldering only allowed at leads (1.6mm from case for 10s)	$T_{sold}$	260	$^\circ\text{C}$



## Thermal Resistance

Parameter	Symbol	Value			Unit	Test Condition
		min.	typ.	max.		
Thermal resistance, junction – case.	RthJC	-	-	2.7	°C/W	-
Thermal resistance, junction - ambient(min. footprint)	RthJA	-	-	69	°C/W	-

## Electrical Characteristic (at Tj = 25 °C, unless otherwise specified)

Parameter	Symbol	Value			Unit	Test Condition
		min.	typ.	max.		

## Static Characteristic

Drain-source breakdown voltage	$BV_{DSS}$	650	-	-	V	$V_{GS}=0V, I_D=250\mu A$
Gate threshold voltage	$V_{GS(th)}$	2	-	4	V	$V_{DS}=V_{GS}, I_D=250\mu A$
Zero gate voltage drain current	$I_{DSS}$	-	0.04	1	$\mu A$	$V_{DS}=650V, V_{GS}=0V$ $T_j=25^\circ C$ $T_j=150^\circ C$
Gate-source leakage current	$I_{GSS}$	-	$\pm 10$	$\pm 100$	nA	$V_{GS}=\pm 20V, V_{DS}=0V$
Drain-source on-state resistance	$R_{DS(on)}$	-	150	180	mΩ	$V_{GS}=10V, I_D=10A$
Transconductance	$g_{fs}$	-	12	-	S	$V_{DS}=5V, I_D=10A$

## Dynamic Characteristic

Input Capacitance	$C_{iss}$	-	1625	-	pF	$V_{GS}=0V, V_{DS}=400V,$ $f=1MHz$
Output Capacitance	$C_{oss}$	-	52	-		
Reverse Transfer Capacitance	$C_{riss}$	-	43	-		
Gate Total Charge	$Q_G$	-	42	-	nC	$V_{DS}=520V, I_D=20A,$ $V_{GS}=10V$
Gate-Source charge	$Q_{gs}$	-	11	-		
Gate-Drain charge	$Q_{gd}$	-	18	-		
Turn-on delay time	$t_{d(on)}$	-	30	-	ns	$V_{GS}=10V, V_{DD}=325V,$ $R_{G\_ext}=10\Omega, I_D=3.6A$
Rise time	$t_r$	-	40	-		
Turn-off delay time	$t_{d(off)}$	-	50	-		
Fall time	$t_f$	-	25	-		
Gate resistance	$R_G$	-	10	-	Ω	$V_{GS}=0V, V_{DS}=0V,$ $f=1MHz$



## Body Diode Characteristic

Parameter	Symbol	Value			Unit	Test Condition
		min.	typ.	max.		
Body Diode Forward Voltage	$V_{SD}$	-	0.83	1.5	V	$V_{GS}=0V, I_{SD}=10A$
Body Diode Continuous Forward Current	$I_S$	-	-	20	A	TC = 25°C
Body Diode Pulsed Current	$I_S$ pulse	-	-	81	A	TC = 25°C
Body Diode Reverse Recovery Time	$t_{rr}$	-	256	-	ns	$I_F=1A, dI/dt=100A/\mu s$
Body Diode Reverse Recovery Charge	$Q_{rr}$	-	2542	-	nC	



## Typical Performance Characteristics

Fig 1: Output Characteristics

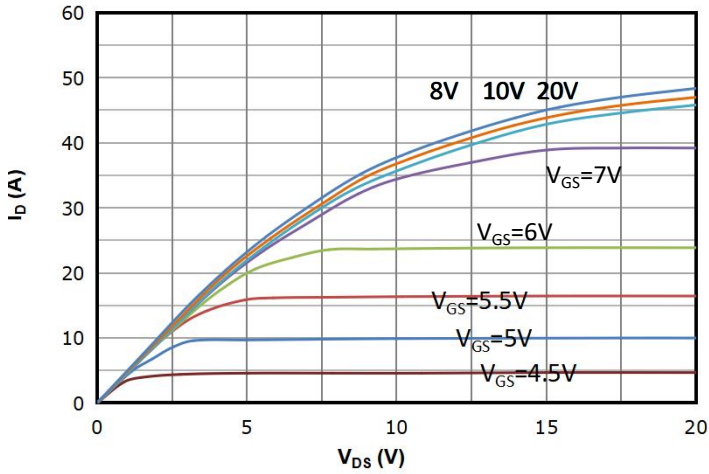


Fig 2: Transfer Characteristics

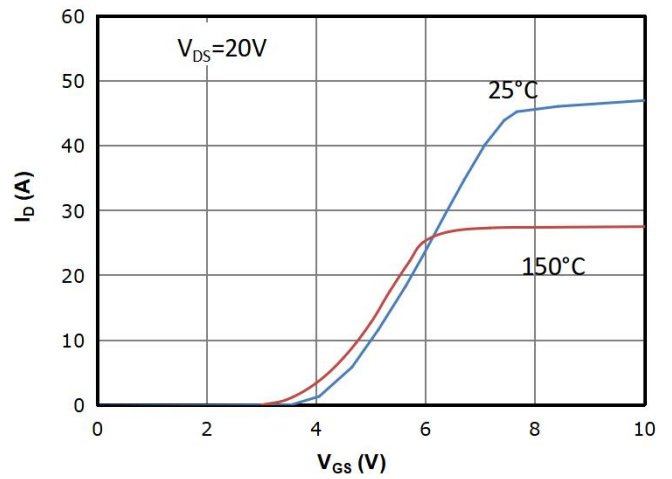


Fig 3:  $R_{DS(on)}$  vs Drain Current and Gate Voltage

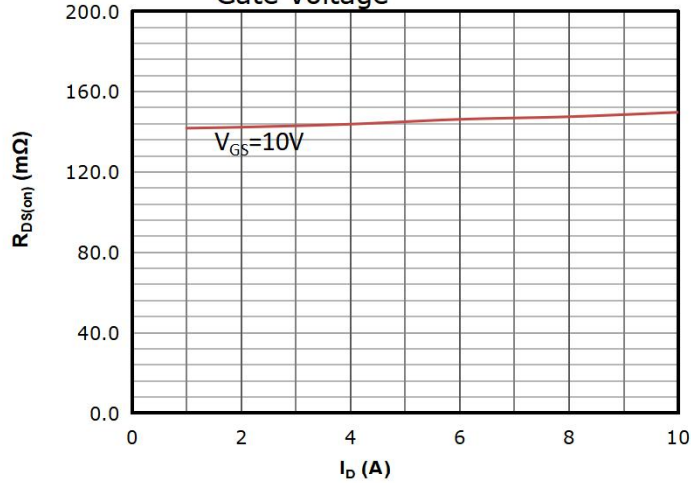


Fig 4:  $R_{DS(on)}$  vs Gate Voltage

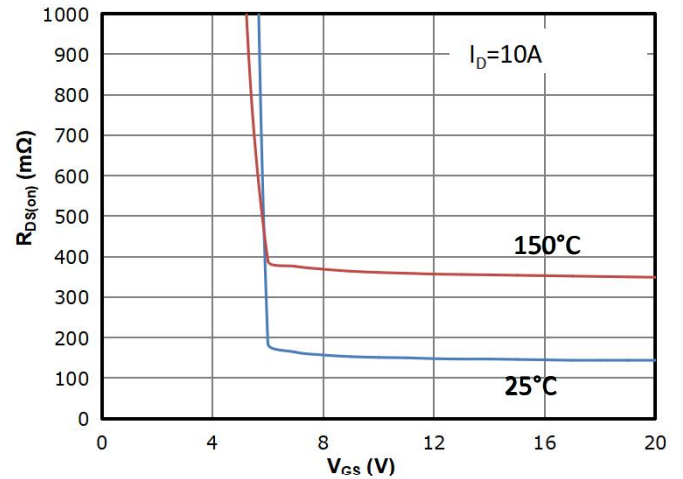


Fig 5:  $R_{DS(on)}$  vs. Temperature

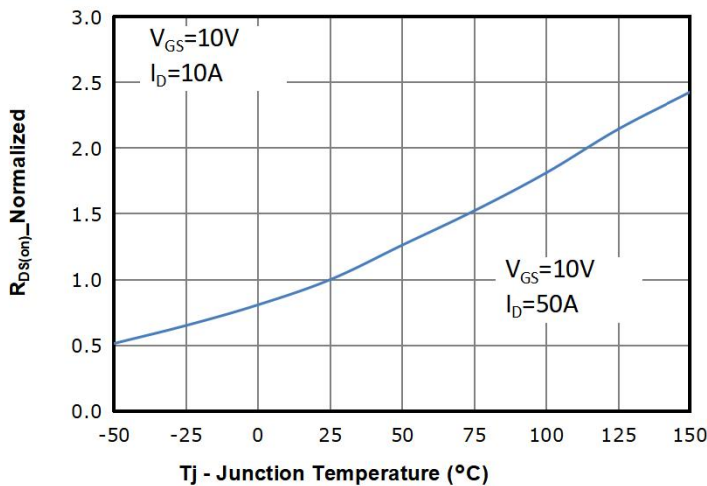


Fig 6:  $V_{GS(th)}$  vs. Temperature

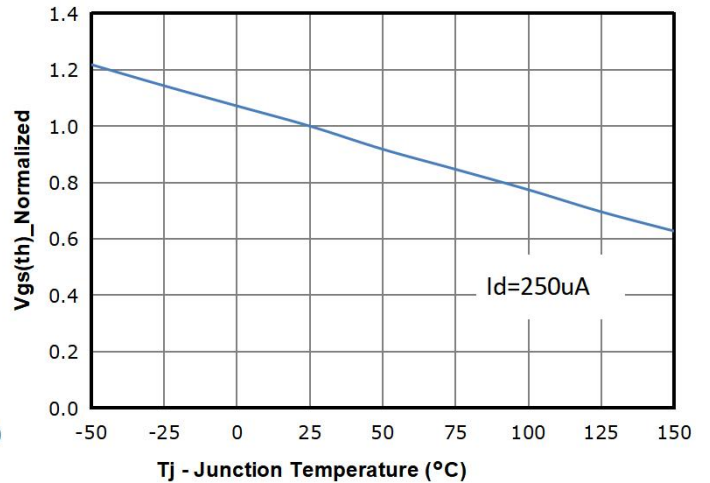


Fig 7: BVdss vs. Temperature

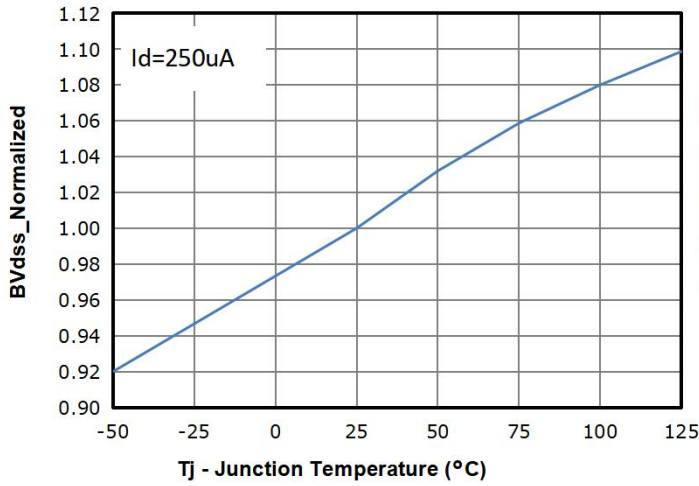


Fig 8: Capacitance Characteristics

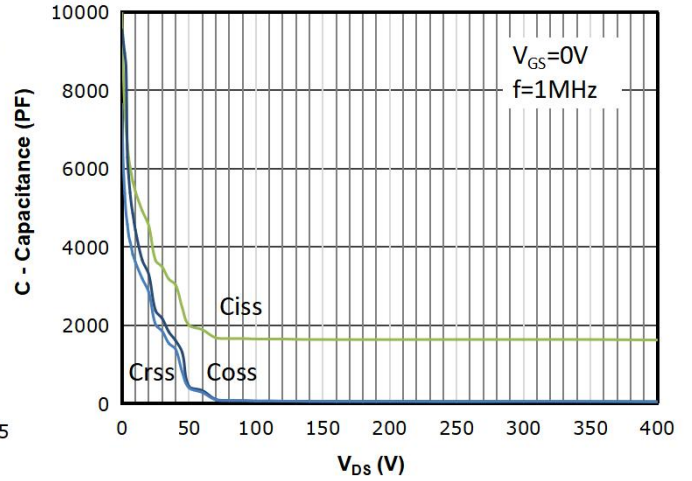


Fig 9: Gate Charge Characteristics

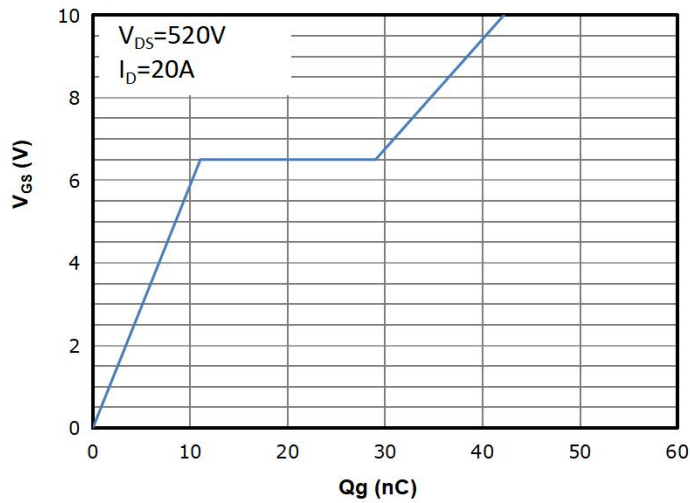


Fig 10: Body-diode Forward Characteristics

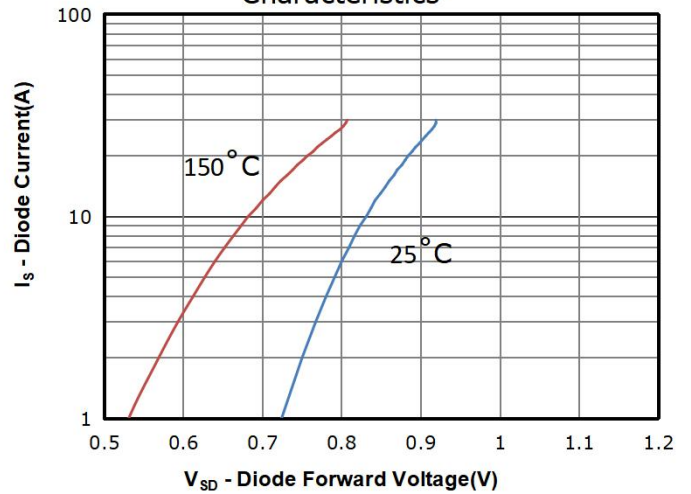


Fig 11: Power Dissipation

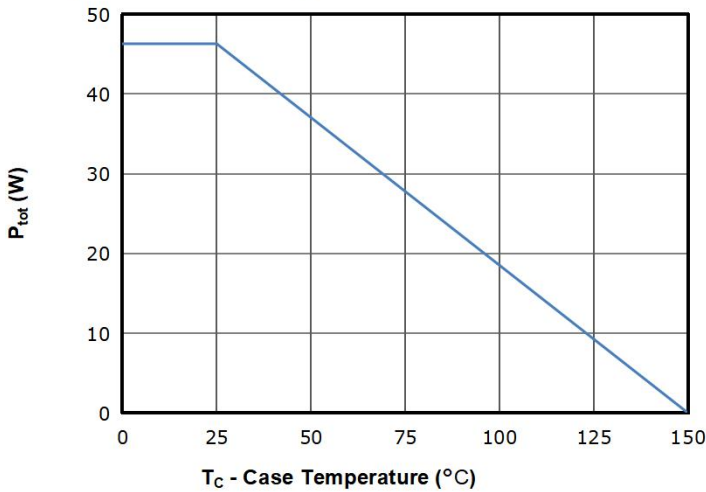


Fig 12: Drain Current Derating

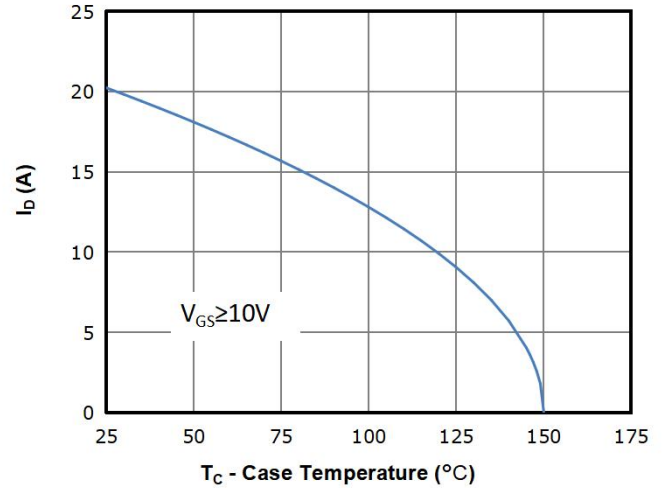




Fig 13: Safe Operating Area

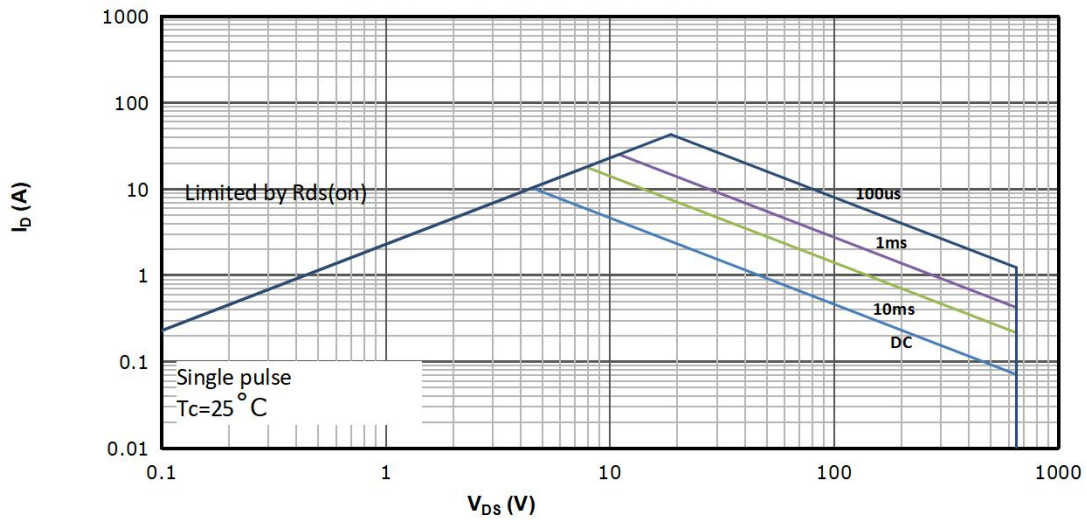
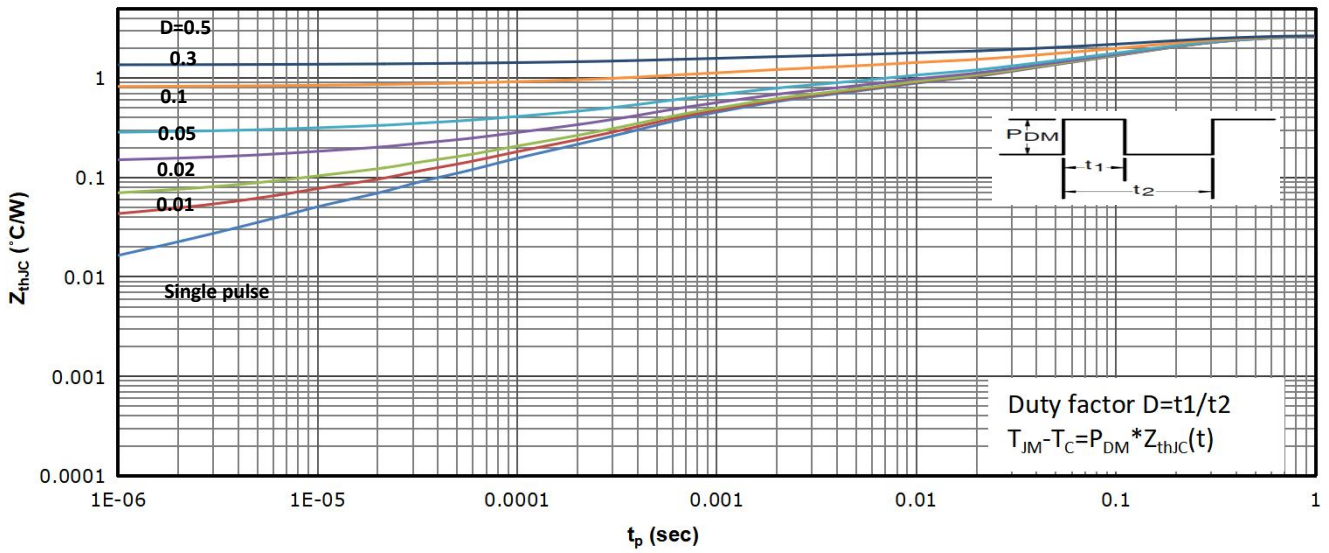
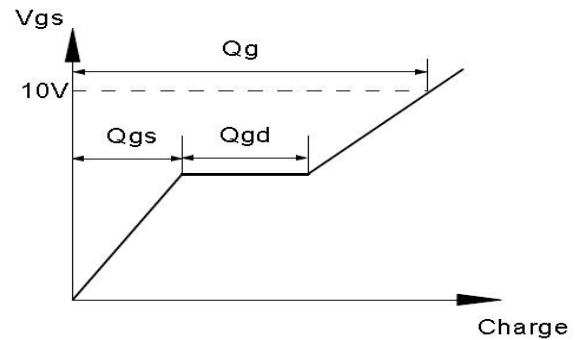
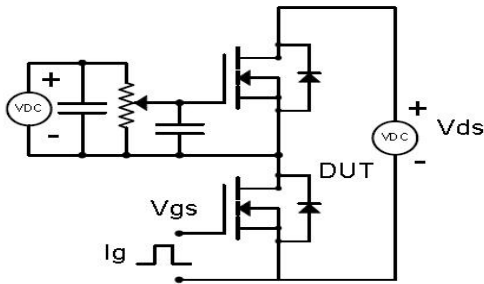


Fig 14: Max. Transient Thermal Impedance

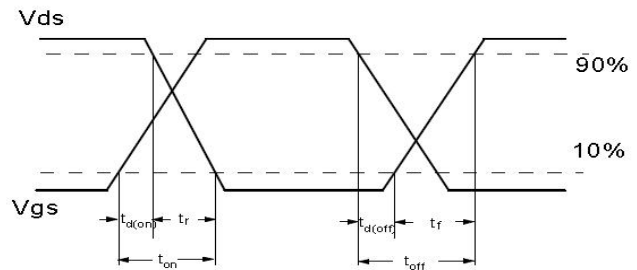
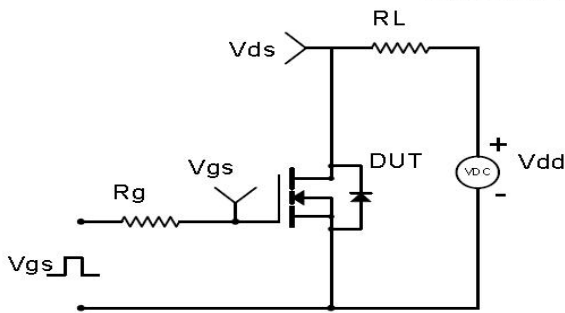


## Test Circuit & Waveform

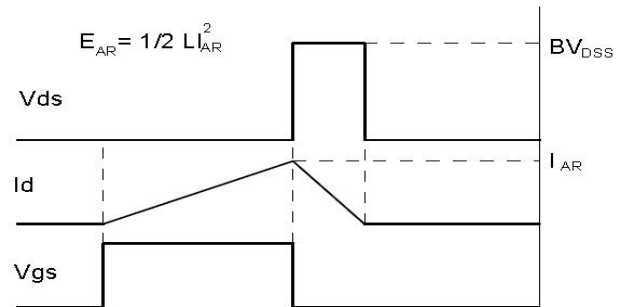
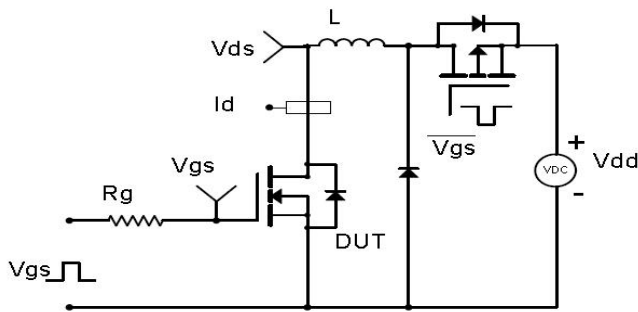
Gate Charge Test Circuit & Waveform



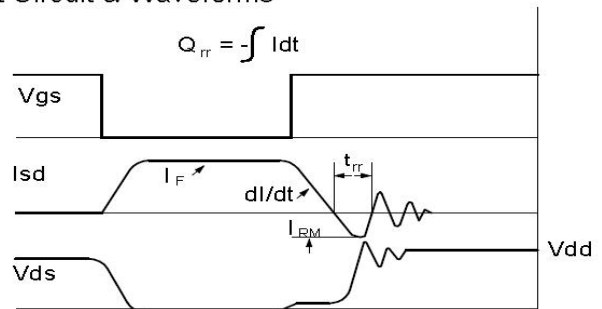
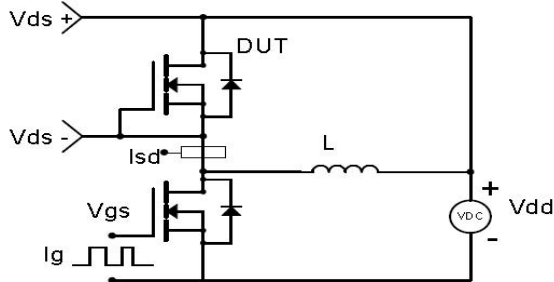
Resistive Switching Test Circuit & Waveforms



Unclamped Inductive Switching (UIS) Test Circuit & Waveforms



Diode Recovery Test Circuit & Waveforms



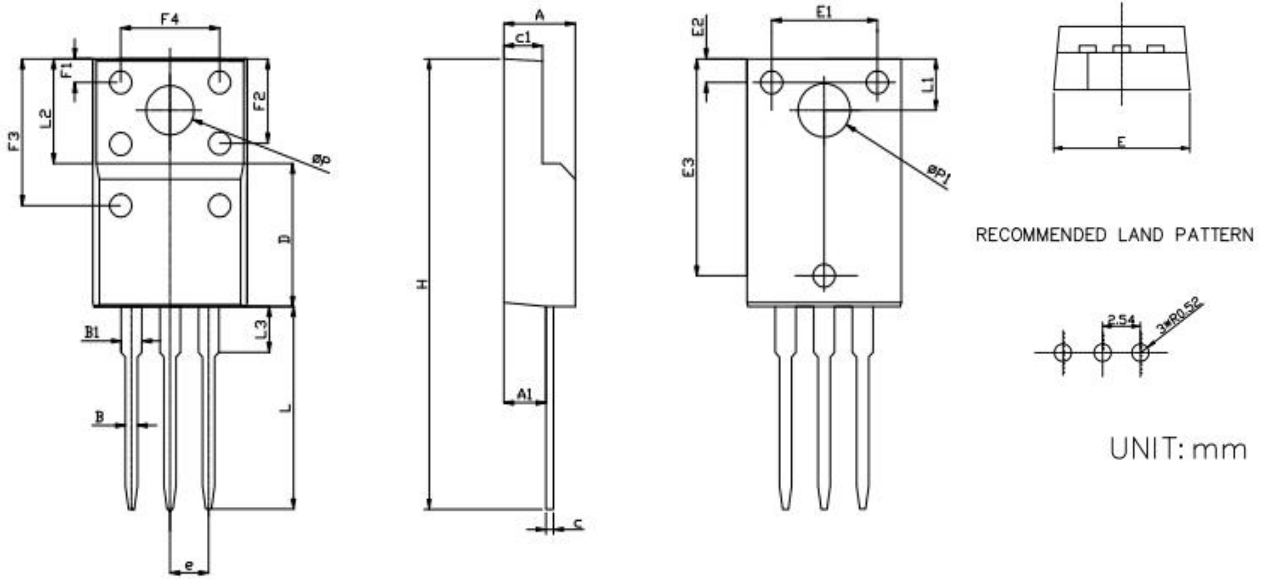
# PWE180N65MFS

Perfect MOS6 N-MOSFET 650V, 150mΩ, 20A



重庆平伟实业股份有限公司

## Package Outline: TO-220MF-3L



SYMBOL	MILLIMETERS		INCHES	
	MIN	MAX	MIN	MAX
A	4.50	4.90	0.177	0.193
A1	2.63	2.89	0.104	0.114
B	0.75	0.90	0.030	0.035
B1	1.15	1.55	0.045	0.061
C	0.40	0.60	0.016	0.024
C1	2.34	2.74	0.092	0.108
D	8.87	9.47	0.349	0.373
e	2.54		0.100	
E	9.86	10.46	0.388	0.412
E1	6.86	7.06	0.270	0.278
E2	1.40	1.60	0.055	
E3	13.80	14.00	0.543	0.551
F1	1.40	1.60	0.055	
F2	5.15	5.65	0.203	0.222
F3	9.10	9.70	0.358	0.382
F4	6.70	7.30	0.264	0.287
H	28.50	29.50	1.122	1.161
L	12.58	13.38	0.495	0.527
L1	3.15	3.45	0.124	0.136
L2	6.70		0.264	
L3	2.63	3.23	0.104	0.127
φP	2.90	3.48	0.114	0.137
φP1	3.15	3.75	0.124	0.148





## Revision History

Revision	Date	Major changes
1.0	2022/8/8	Release of Foraml Version.

## Disclaimer

Any and all semiconductor products have certain probability to fail or malfunction, which may result in personal injury, death or property damage. Customer are solely responsible for providing adequate safe measures when design their systems.

Unless otherwise specified in the datasheet, the product is designed and qualified as a standard commercial product and is not intended for use in applications that require extraordinary levels of quality and reliability, such as automotive, aviation/aerospace and life-support devices or systems.

Buyer is responsible for its products and applications using PingWei products, including compliance with all laws, regulations and safety requirements or standards, regardless of any support or applications information provided by PingWei.

“Typical” parameters which may be provided in PingWei data sheets and/or specifications can and do vary in different applications and actual performance may vary over time. All operating parameters, including “Typicals” must be validated for each customer application by customer’s technical experts

ALL PRODUCT, PRODUCT SPECIFICATIONS AND DATA ARE SUBJECT TO CHANGE WITHOUT NOTICE TO IMPROVE RELIABILITY, FUNCTION OR DESIGN OR OTHERWISE